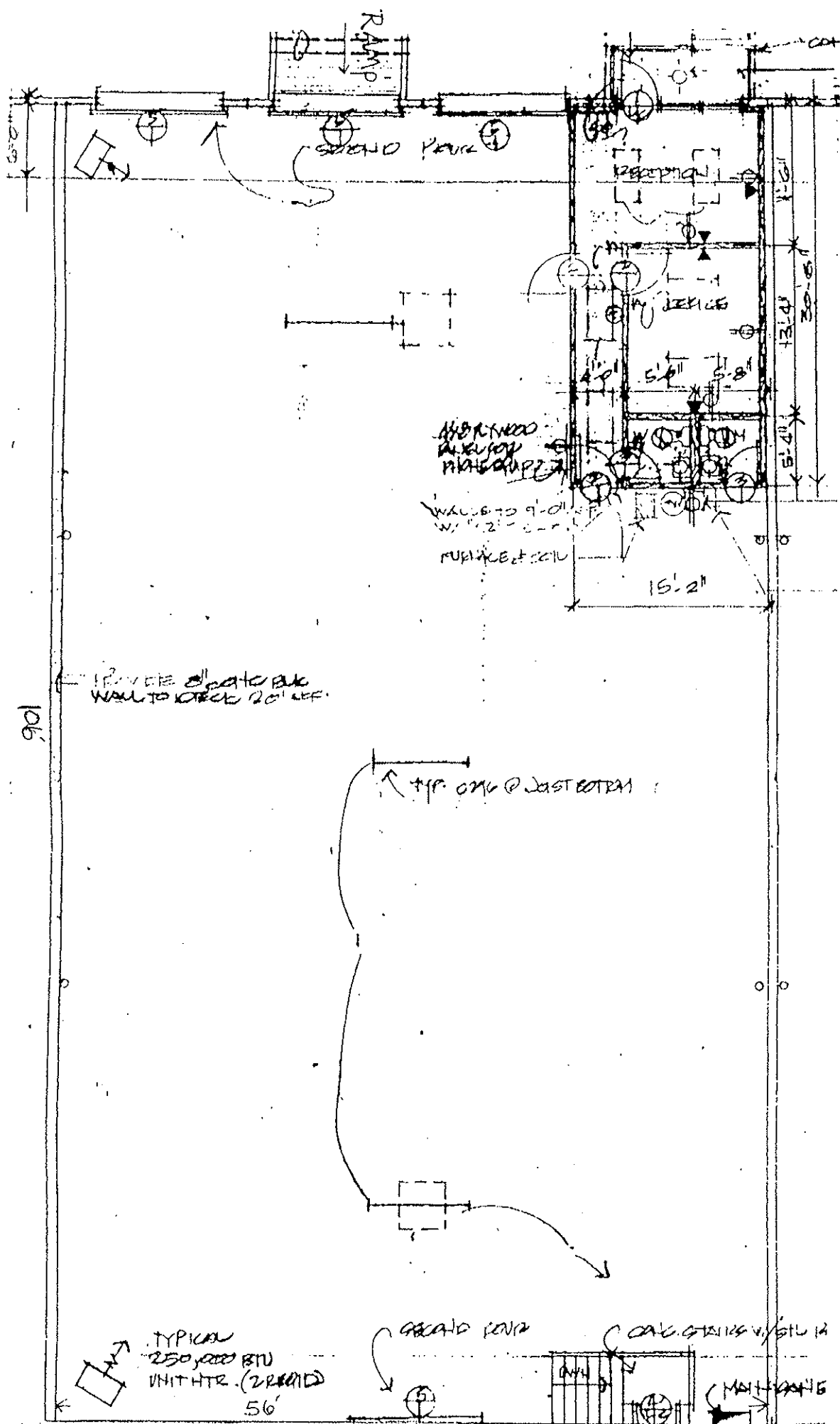


1024 Avenue M
Grand Prairie, Texas

5,936 Square Feet
463 SF Office Area
2 Dock-High Doors
1 Drive-In Ramp
22' Clear Height



REMOVE 8' x 10' BUC
WALL TO KITCHEN 20' OFF.

SHORTWOOD
AREA FOR
PLATE SHIPP

WALLS TO 9'-0" H
W/ 12" C-C
PURPOSE & SITU

15'-2"

TYP. CURVE @ EAST EXTERIOR

TYPICAL
250,000 BTU
UNIT HTR. (2 REQUIRED)
56'

GRAND DOOR

DRIVE-IN RAMP

DOCK-HIGH DOOR

106'